

The NeuCrystal™ F40 is a highly sophisticated full digital ultrasound imaging system. With advanced imaging technology and ergonomic system design, the F40 system brings crystal clear image, enjoyable experience and solid confidence to doctors and patients.

- Advanced digital technology
- Outstanding imaging quality
- User friendly workflow design
- Comprehensive clinical application

NeuCrystal™ F40



NeuCrystal™ F40

Full Digital Ultrasound Diagnostic System

Landwind International Medical Science Pte Ltd
Landwind Science & Technology Park, Tangtou Avenue,
Shiyan Town, Bao'an District, Shenzhen China 518108
Tel: +86-755-83933788 Fax: +86-755-27353240
Email: Sales@landwindmedical.com
Web: www.landwindmedical.com

DISTRIBUTOR:

Specifications and appearance are subject to change without prior notice.
P/N: 840200400803 2009.09

LANDWIND
MEDICAL

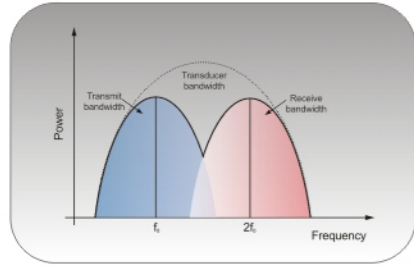


NeuCrystal[™] **F40**

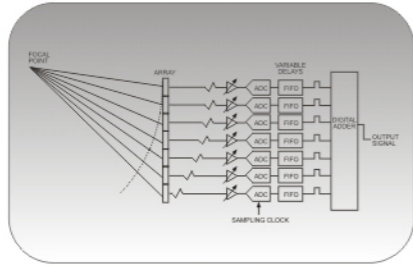


Advanced Digital technology

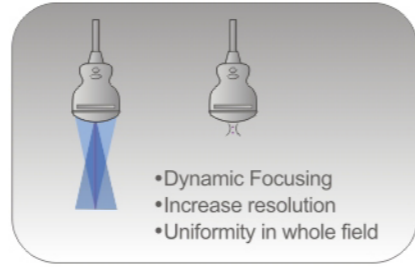
Tissue Harmonic Imaging



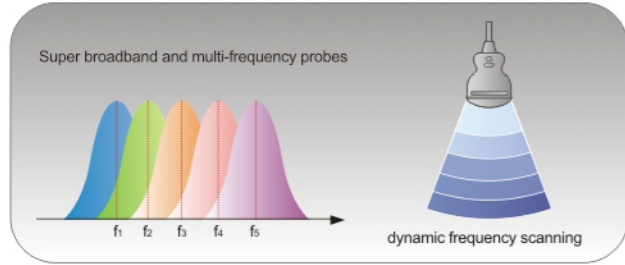
Digital Beam-forming



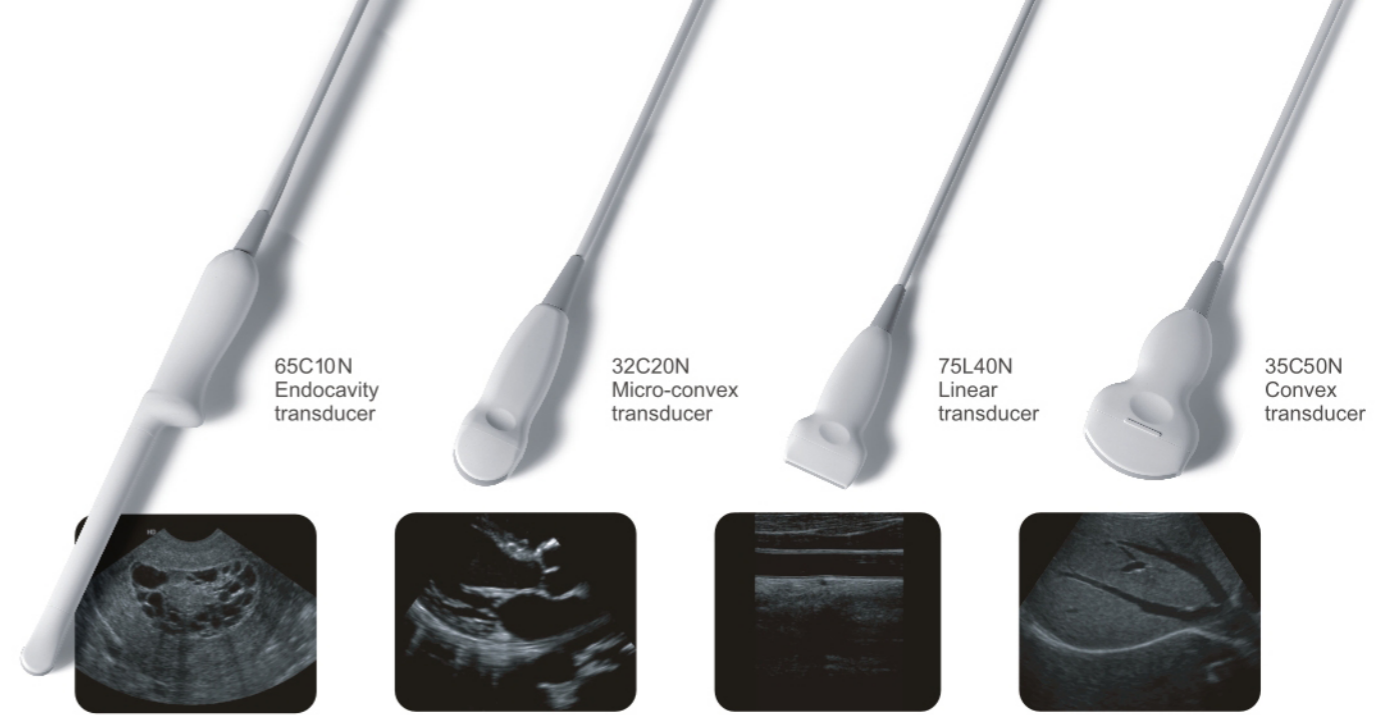
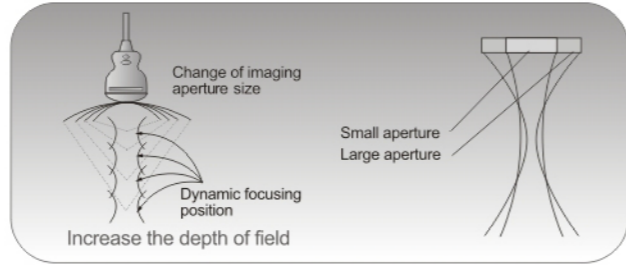
Dynamic Receiving Focusing



Dynamic Frequency Scanning



Real-time Dynamic Aperture



Outstanding imaging quality

Crystal clear and high resolution imaging brings accurate diagnosis.

THI Tissue Harmonic Imaging for difficult patient* (Option)

Multiple frequency transducers up to 4 frequency points

Wide band frequency from 2 MHz to 10 MHz (depending on transducers) for excellent penetration and definition

Leading imaging processing technology for superior imaging optimization

Outstanding Features

Large capacity of permanent image storage & cine loop

i-View integrated workstation for patient information, image and report

Back-lit and task assigned control panel

USB 2.0 for Flexible image transportation



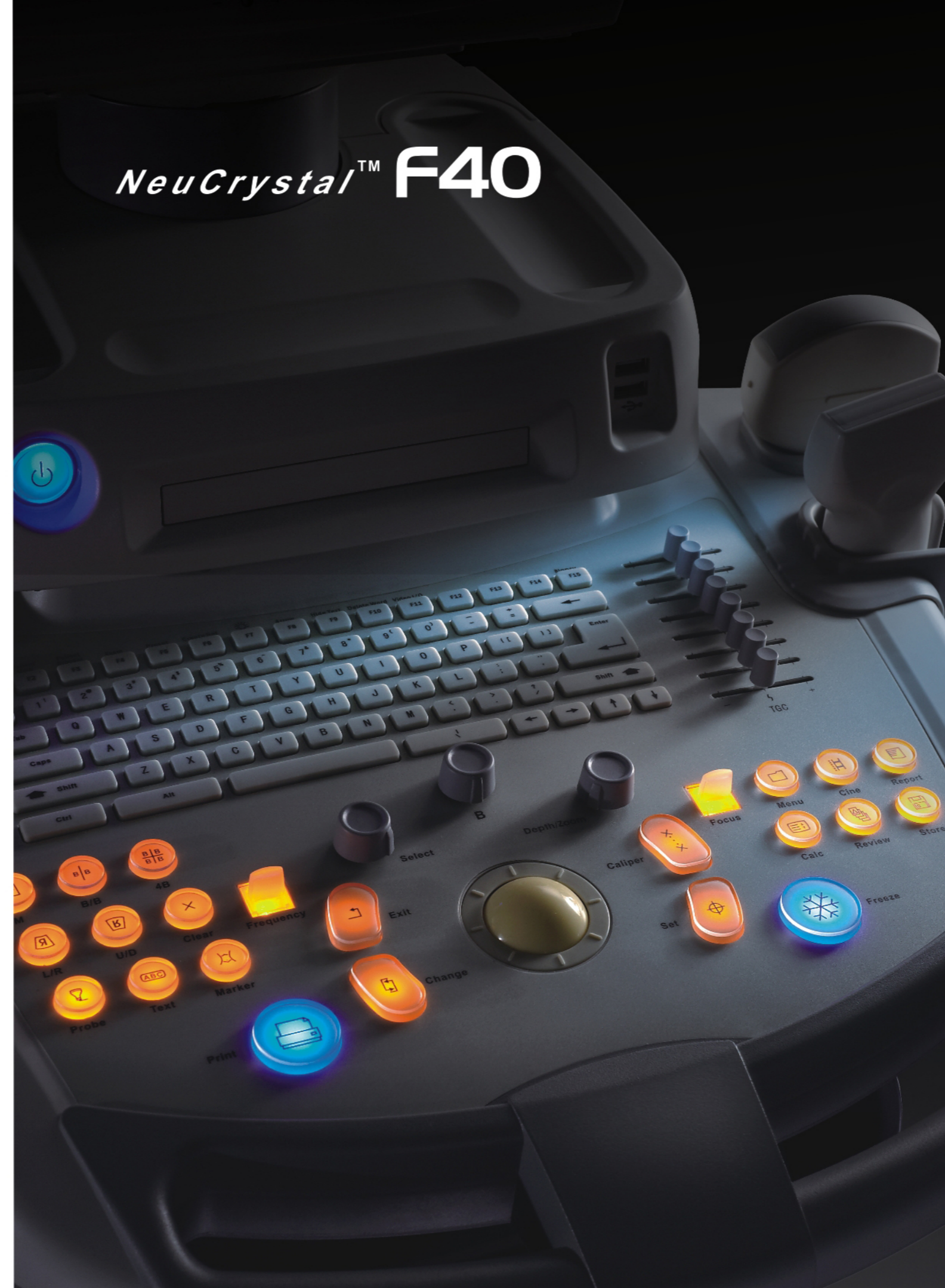
Comprehensive Clinical Application

Wide selection of multi-frequency transducers for different applications

Wide selection of preset exam modes for optimized clinical image

Abundant measurement packages for Obstetrics, Gynecology, Urology, Small Parts, Orthopedics and Cardiology.

NeuCrystal™ F40



Technical specifications

General Description:

Imaging Modes: B,B/B,4B,B/M,M

Display: 15" LCD monitor

Gray Scale: 256

Gain: up to 100dB

Transducer connector: 2 (standard)

Scanning depth: up to 250mm

Calculation Package: cardiac, gynecology, obstetrics, urology, orthopedics

Peripheral ports:

USB,LAN,VGA,RS-232,Remote,S-video,Video output,Footswitch Port

Others:

Net weight: 47Kg

Power supply: 100-240VAC 50Hz/60Hz

Dimensions: 1000x600x1260mm

Imaging processing:

Pre-processing:

Tissue Harmonic Imaging*(Option)

8-segment TGC adjustment

FOV adjustment

Dynamic range

Line density

IQS: Automatic image optimization

Post-processing:

Frame correlation

Edge enhancement

Gray scale

Gray reject

Image orientations reverse (U/D, R/L)

Polarity reverse

Standard Configurations:

F40 main unit

15" LCD monitor

Two transducer connectors

512 frames cine loop

i-View

Electronic convex transducer (35C50N:

2.0/3.5/4.5/5.5 MHz)

Functions:

ZOOM: Local zoom,Panoramic zoom

Image memory:

Permanent image storage: up to 800 frames

Cine loop: 512 frames for B mode, 35

seconds for M mode

i-View: Integrated workstation for patient

information, image and report

Options:

14" non-interlaced monitor

Tissue Harmonic Imaging

Electronic micro-convex transducer (32C20N:2

.0/3.5/4.5/5.5MHz)

Electronic linear transducer (75L40N:

6.0/7.5/8.5/10.0 MHz)

Electronic endocavity transducer (65C10N:

5.0/6.5/8.0/9.0 MHz)

Biopsy guide bracket

Thermal printer

Foot switch

Software Functions:

Exam Modes: abdomen, cardiac,

gynecology, obstetrics, urology, orthopedics,

small part, emergency

General Measurement: distance,

circumference, area (ellipse/trace), volume,

angle

(NOTE: technical specifications subject to

change without prior notice.)